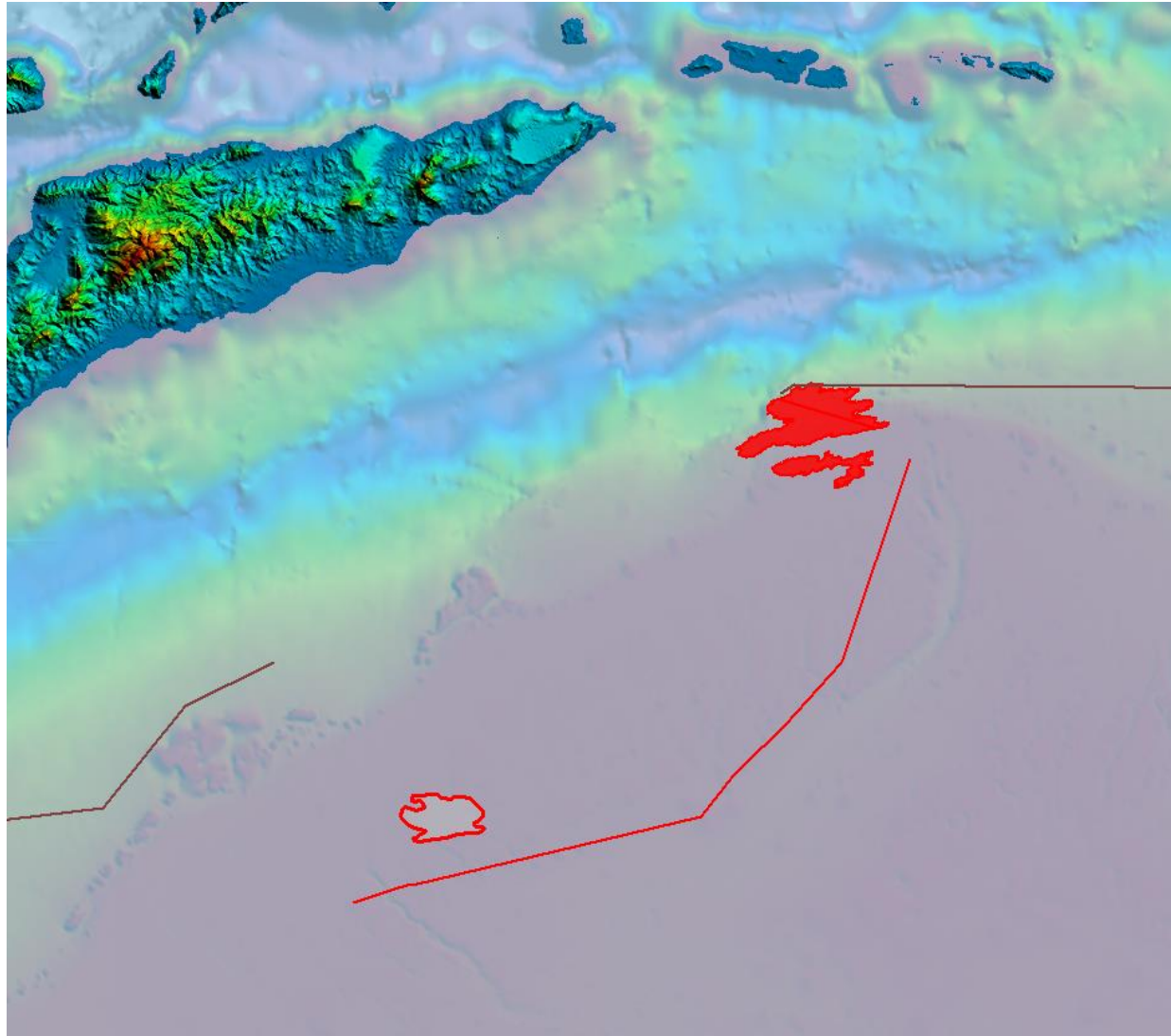
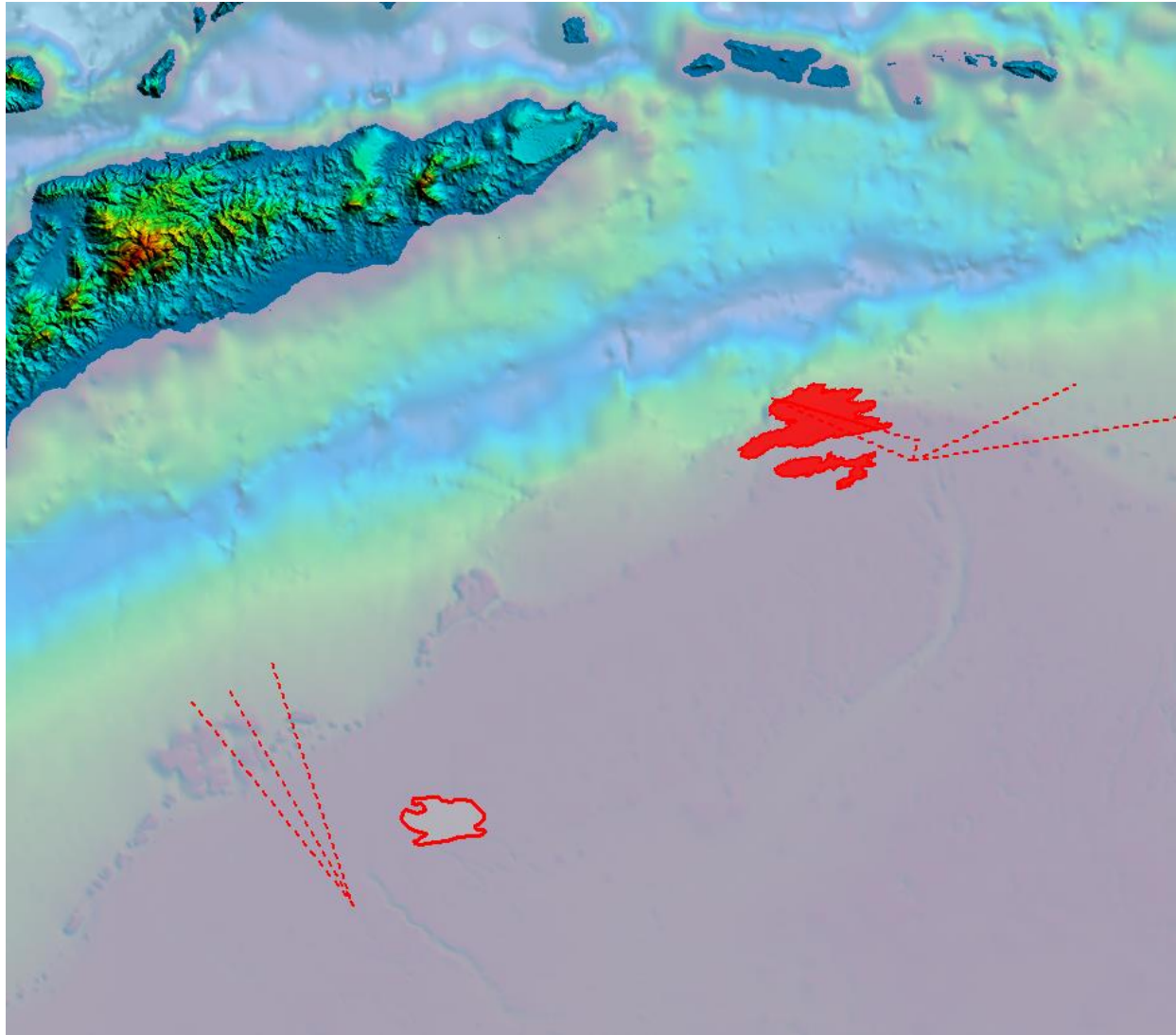


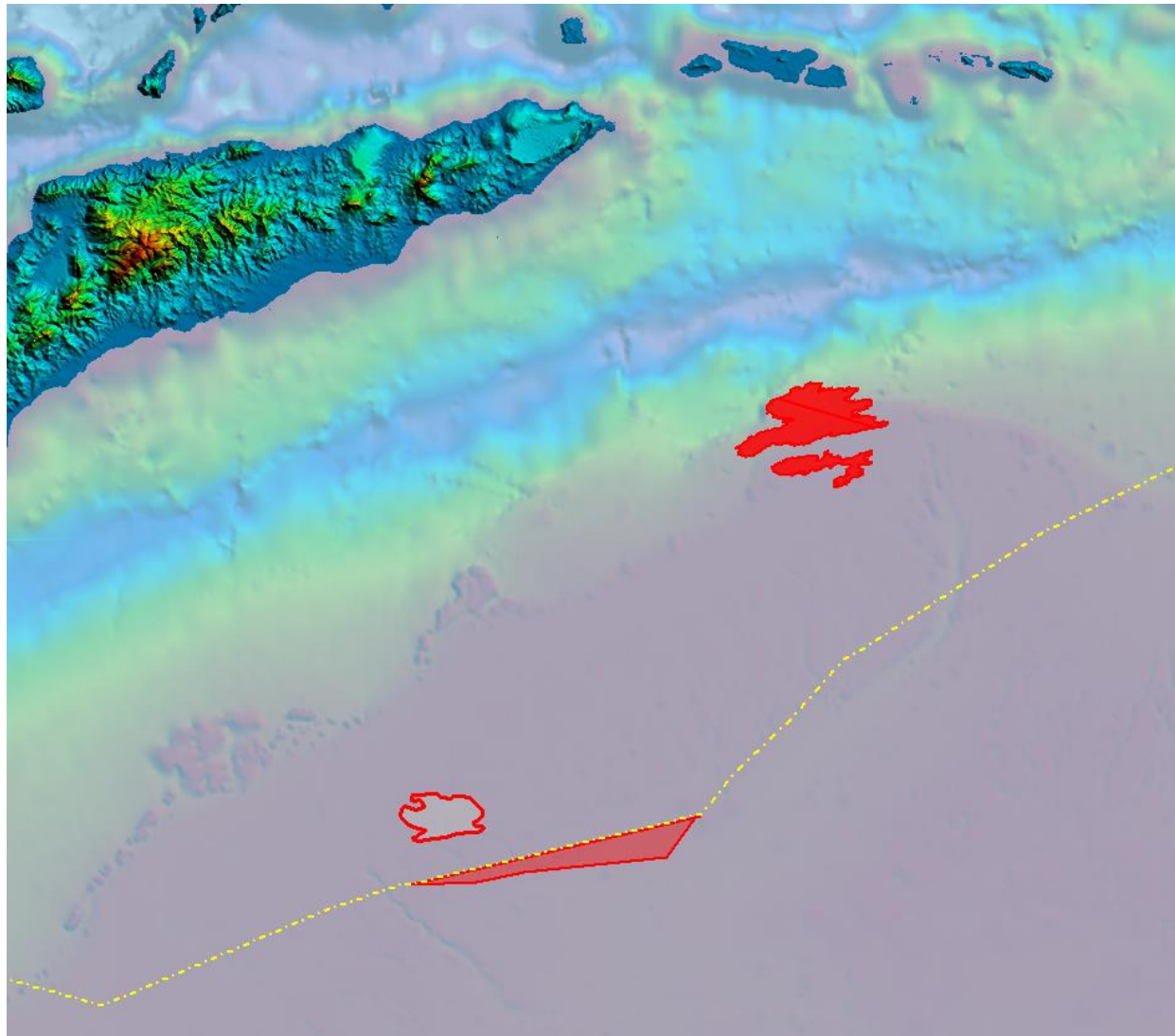
The reality of the East Timor boundaries after the 2018 Treaty



Permanent seabed boundaries: **Australia-East Timor red lines**; Australia Indonesia brown lines. These lines are seabed boundaries only, and do not define any Water Column or Exclusive Economic Zone (EEZ). The seabed boundaries only relate to the seabed and do not define any maritime, aeronautical, or fishing sovereignty.



Provisional seabed boundaries: **Australia-East Timor dashed red lines**. These lines are provisional for at least 30 years if not longer, and do not define any Water Column or Exclusive Economic Zone (EEZ). The seabed boundaries only relate to the seabed and do not define any maritime, aeronautical, or fishing sovereignty.



The only existing Water Column or EEZ boundary (yellow), between Australia and Indonesia only. None exists between East Timor and Indonesia. There is no boundary that demarcates Timorese from Indonesian maritime, aeronautical, and fishing sovereignty.

The nearly 1,000 sq. km (100,000 hectares) red triangle of EEZ in the south, north of the median line, was lost by East Timor to Australia in the 2018 Treaty, without explanation.

And that, my friends, is not a joke.